

## Anti-BCL6B antibody

<b>Cat. No.</b>	ml124241
<b>Package</b>	25 µl/100 µl/200 µl
<b>Storage</b>	-20°C, pH7.4 PBS, 0.05% NaN <sub>3</sub> , 40% Glycerol

### Product overview

<b>Description</b>	Anti-BCL6B rabbit polyclonal antibody
<b>Applications</b>	ELISA, IHC
<b>Immunogen</b>	Fusion protein of human BCL6B
<b>Reactivity</b>	Human, Mouse
<b>Content</b>	0.4 mg/ml
<b>Host species</b>	Rabbit
<b>Ig class</b>	Immunogen-specific rabbit IgG
<b>Purification</b>	Antigen affinity purification

### Target information

<b>Symbol</b>	BCL6B
<b>Full name</b>	B-cell CLL/lymphoma 6B
<b>Synonyms</b>	BAZF; ZNF62; ZBTB28
<b>Swissprot</b>	Q8N143

### Target Background

Bcl-6, a transcriptional repressor, binds Stat recognition-like DNA elements and influences germinal center development and cell differentiation. Additionally, Bcl-6 negatively regulates NF $\kappa$ B expression, thereby inhibiting NF $\kappa$ B-mediated cellular functions. Bcl-6b (B-cell CLL/lymphoma 6, member B), also known as ZNF62, BAZF or ZBTB28, is a 480 amino acid nuclear protein that contains one BTB (POZ) domain and five C2H2-type zinc fingers. Expressed ubiquitously with highest expression in placenta and heart, Bcl-6b associates with Bcl-6 and functions as a sequence-specific transcriptional repressor that is thought to be necessary for early B-cell development. The gene encoding Bcl-6b maps to human chromosome 17, which comprises over 2.5% of the human genome and encodes over 1,200 genes.

订购热线: 4008-898-798

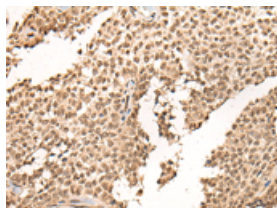
## Applications

### Immunohistochemistry

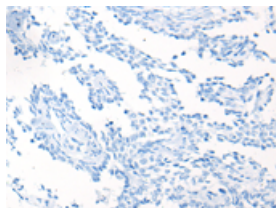
Predicted cell location: Nucleus

Positive control: Human ovarian cancer

Recommended dilution: 25-100



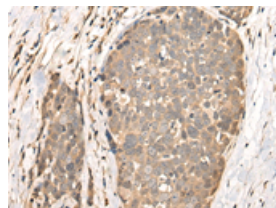
The image on the left is immunohistochemistry of paraffin-embedded Human ovarian cancer tissue using ml124241(BCL6B Antibody) at dilution 1/30, on the right is treated with fusion protein. (Original magnification:  $\times 200$ )



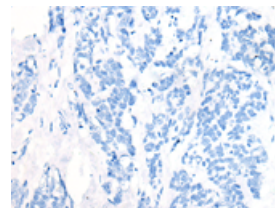
Predicted cell location: Nucleus

Positive control: Human thyroid cancer

Recommended dilution: 25-100



The image on the left is immunohistochemistry of paraffin-embedded Human thyroid cancer tissue using ml124241(BCL6B Antibody) at dilution 1/30, on the right is treated with fusion protein. (Original magnification:  $\times 200$ )



### ELISA

Recommended dilution: 5000-10000

联系电话: 4008-898-798, 021-61725725

联系QQ: 2881505695, 2881505696

邮箱: [mlbio\\_cn@yeah.net](mailto:mlbio_cn@yeah.net)

网址: [www.mlbio.cn](http://www.mlbio.cn)