

## Anti-PRPF8 antibody

<b>Cat. No.</b>	ml263565
<b>Package</b>	25 µl/100 µl/200 µl
<b>Storage</b>	-20°C, pH7.4 PBS, 0.05% NaN <sub>3</sub> , 40% Glycerol

### Product overview

<b>Description</b>	Anti-PRPF8 rabbit polyclonal antibody
<b>Applications</b>	ELISA, WB, IHC
<b>Immunogen</b>	Synthetic peptide of human PRPF8
<b>Reactivity</b>	Human, Mouse
<b>Content</b>	0.6 mg/ml
<b>Host species</b>	Rabbit
<b>Ig class</b>	Immunogen-specific rabbit IgG
<b>Purification</b>	Antigen affinity purification

### Target information

<b>Symbol</b>	PRPF8
<b>Full name</b>	pre-mRNA processing factor 8

**Synonyms** PRP8; RP13; HPRP8; PRPC8; SNRNP220

**Swissprot** Q6P2Q9

#### **Target Background**

Pre-mRNA splicing occurs in 2 sequential transesterification steps. The protein encoded by this gene is a component of both U2- and U12-dependent spliceosomes, and found to be essential for the catalytic step II in pre-mRNA splicing process. It contains several WD repeats, which function in protein-protein interactions. This protein has a sequence similarity to yeast Prp8 protein. This gene is a candidate gene for autosomal dominant retinitis pigmentosa.

## Applications

### Immunohistochemistry

Predicted cell location: Nucleus or Cytoplasm

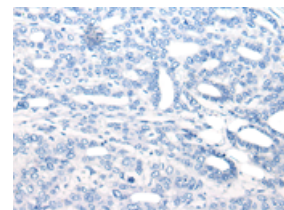
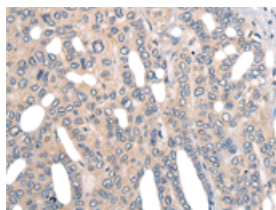
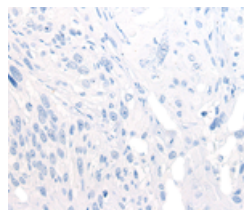
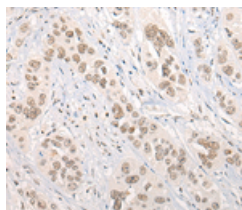
Predicted cell location: Nucleus or Cytoplasm

Positive control: Human esophagus cancer

Positive control: Human liver cancer

Recommended dilution: 20-100

Recommended dilution: 20-100



The image on the left is immunohistochemistry of paraffin-embedded Human esophagus cancer tissue using ml263565(PRPf8 Antibody) at dilution 1/20, on the right is treated with synthetic peptide. (Original magnification:  $\times 200$ )

The image on the left is immunohistochemistry of paraffin-embedded Human liver cancer tissue using ml263565(PRPf8 Antibody) at dilution 1/20, on the right is treated with synthetic peptide. (Original magnification:  $\times 200$ )

### Western blotting

Predicted band size: 274 kDa

Positive control: 293T, K562, Raji, Hela and NIH/3T3 cell lysates

Recommended dilution: 500-2000

Gel: 6%SDS-PAGE

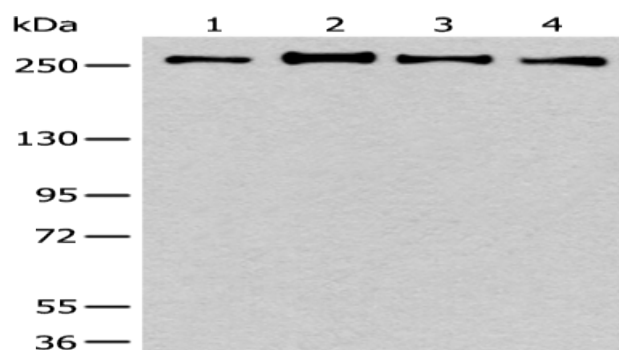
Lysate: 40 µg

Lane 1-5: 293T, K562, Raji, HeLa and NIH/3T3 cell lysates

Primary antibody: ml263565(PRPF8 Antibody) at dilution 1/600

Secondary antibody: Goat anti rabbit IgG at 1/8000 dilution

Exposure time: 50 seconds



#### ELISA

Recommended dilution: 5000-10000

联系电话: 4008-898-798, 021-61725725

联系QQ: 2881505695, 2881505696

邮箱: [mlbio\\_cn@yeah.net](mailto:mlbio_cn@yeah.net)

网址: [www.mlbio.cn](http://www.mlbio.cn)